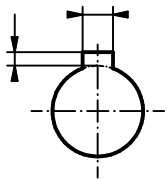
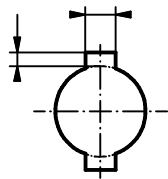


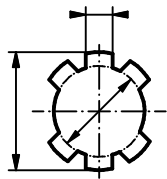
Legend	
Term	Meaning
MW	Mounting Width
FW	Facing Width



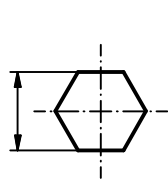
One Keyway
DIN 6885-1



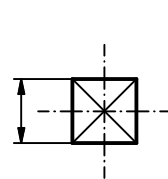
Two keyways
DIN 6885-1



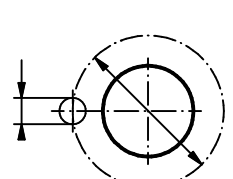
Turtle bore
DIN ISO 14



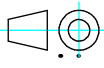
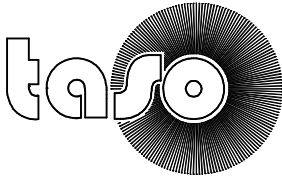
Hexagon bore
DIN 475-1



Square bore
DIN 475-1



Driving hole
N=

 For these "technical documents" according to ISO 16016 we reserve ourselves all rights.	Tolerance: DIN ISO 2768m		Scale:		Designation: Single section brush			
	Date:		Name:		Dimensions:			
Material:			Edit.		Taso Art.Nr.:			
Verif.			Norm		Customer Art.Nr.:			
			Drawing Nr.:					
			State		Modification			
			Date		Name			