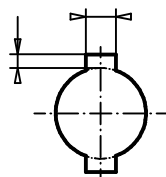
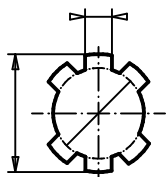


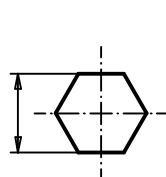
One Keyway  
DIN 6885-1



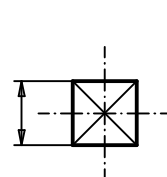
Two keyways  
DIN 6885-1



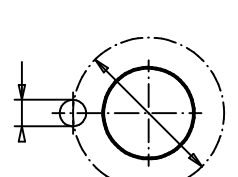
Turtle bore  
DIN ISO 14



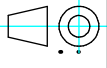
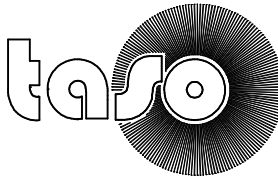
Hexagon bore  
DIN 475-1



Square bore  
DIN 475-1



Driving hole  
N=

 For these "technical documents" according to ISO 16016 we reserve ourselves all rights.	Tolerance: DIN ISO 2768m		Scale:	Designation: <b>Wheel brush</b>		
	Date:		Name:	Dimensions:		
Material:	Edit.	Verif.	Norm	Taso Art.Nr.:		
				Customer Art.Nr.:		
				Drawing Nr.:		
State				Modification	Date	Name