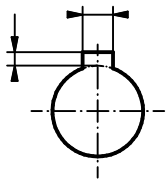
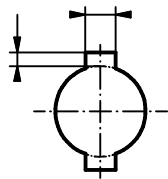


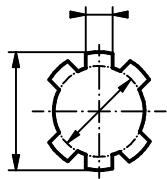
Legend	
Term	Meaning
MW	Mounting Width
FW	Facing Width



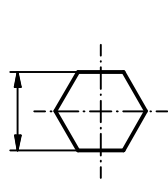
One Keyway
DIN 6885-1



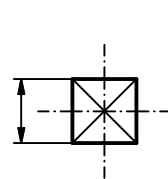
Two keyways
DIN 6885-1



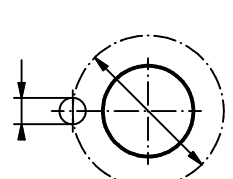
Turtle bore
DIN ISO 14



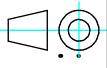
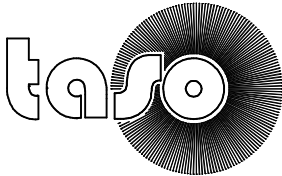
Hexagon bore
DIN 475-1



Square bore
DIN 475-1



Driving hole
N=

 For these "technical documents" according to ISO 16016 we reserve ourselves all rights.	Tolerance: DIN ISO 2768m		Scale:		Designation: Single section brush				
	Date:		Name:		Dimensions:				
Material:				Edit.		Taso Art.Nr.:			
Verif.				Norm		Customer Art.Nr.:			
				Drawing Nr.:					
				State		Modification		Date	
				Name					