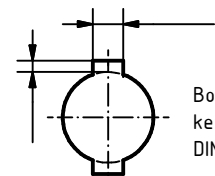
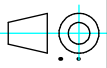
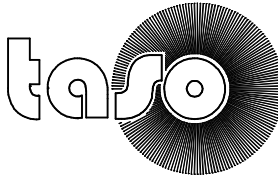


Type of filament:



Bore with keyway
DIN 6885-1

	For these "technical documents" according to ISO 16016 we reserve ourselves all rights.			Tolerance:	Scale:	Designation:
				DIN ISO 2768m		
Material:				Date:	Name:	Dimensions:
				Edit.		
				Verif.		Taso Art.Nr.:
				Norm		
						Customer Art.Nr.:
State	Modification	Date	Name	Drawing Nr.:		