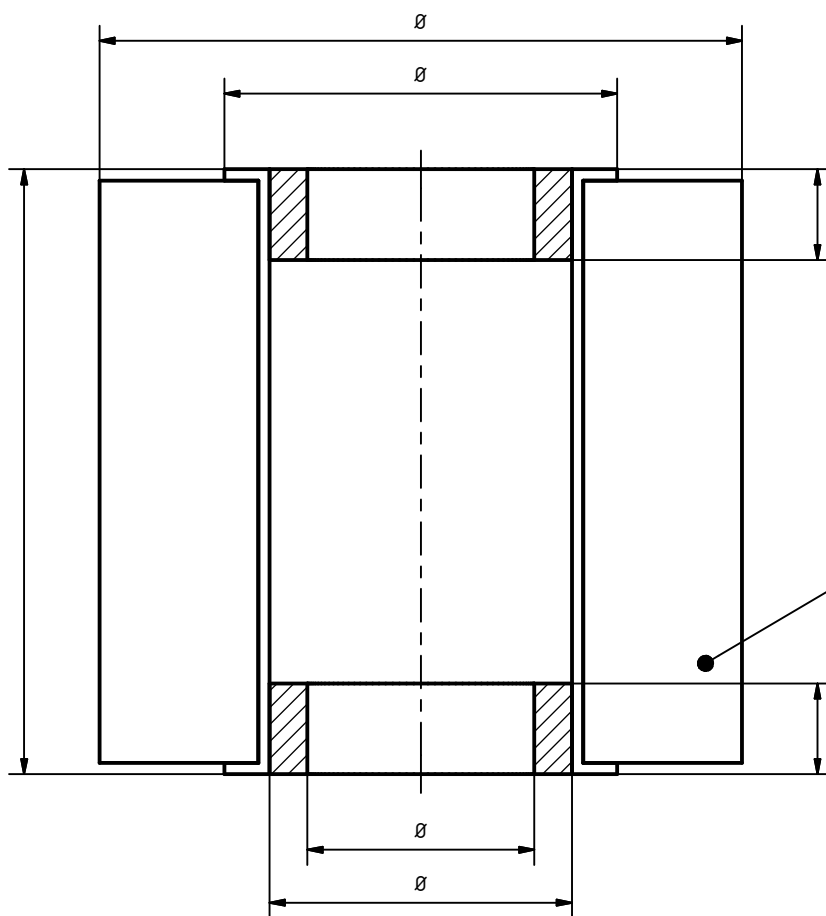
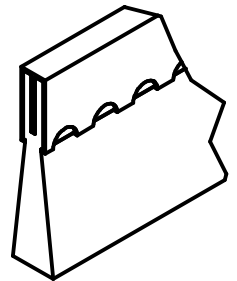
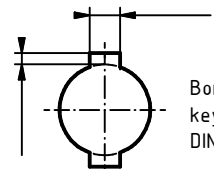


B



Type of filament: _____



Bore with keyway
DIN 6885-1

	For these "technical documents" according to ISO 16016 we reserve ourselves all rights.			Tolerance: DIN ISO 2768m	Scale:	Designation: Spiral roller brush
	Material:			Date:	Name:	Dimensions:
				Edit.		Taso Art.Nr.:
				Verif.		Customer Art.Nr.:
				Norm		Drawing Nr.:
State	Modification	Date	Name			